

O SAY... CAN YOU SEW!

QUILT ALONG

CLUE 7 - MAKE 142 - SASHING STRIPS

FABRICS NEEDED FOR FINISHING:

WITHOUT BORDER	1/2 yard - binding	6 yards - backing
WITH BORDER	3/4 yards - binding	8 yards - backing

CUTTING INSTRUCTIONS:

From the cream fabric, cut:
142 - 1 1/2" x 9 1/2" strips

From the dark fabric, cut:
80 - 1 1/2" x 1 1/2" squares
640 - 1" x 1" squares

Draw a diagonal line on wrong side of the 1" square of star point. Place the square on each side of the sashing strip as shown and stitch on drawn line. Trim a 1/4" away from stitch line. Press corners back.

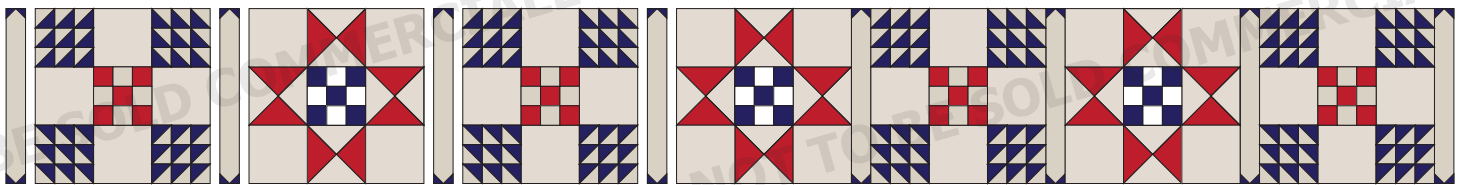


Add next 2 star points to sashing strips, stitch on line and trim 1/4" away from stitched line. Press corners back. Make a total of 142 sashing strips.

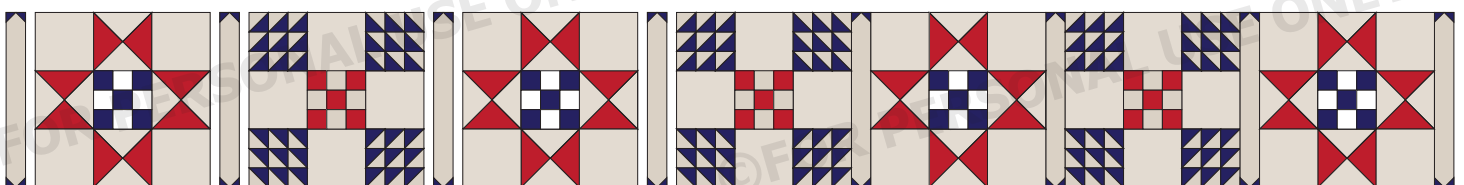
Stitch together 7 sashing strips and 6 - 1 1/2" squares for a total of 10 long sashing strips.



Layout and stitch together 3 block 1s, 4 block 2s and 8 sashing strips as shown. Stitch a total of 5 rows.



Layout and stitch together 4 block 1s, 3 block 2s and 8 sashing strips as shown. Stitch a total of 4 rows.



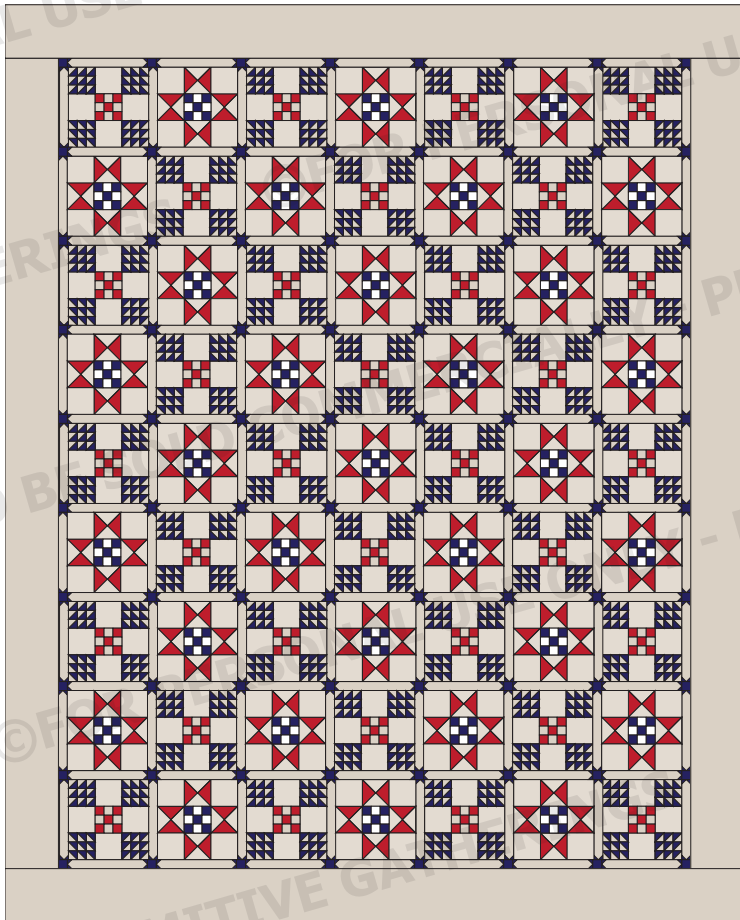
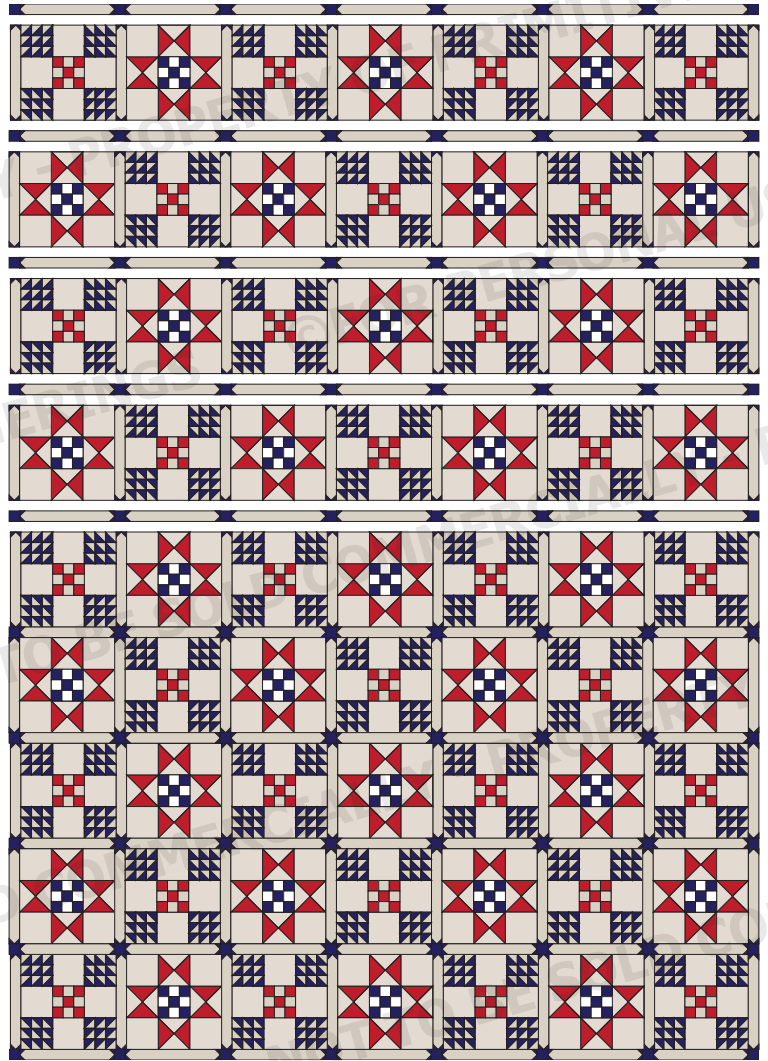
Primitive Gatherings

8567 South Loop Road, Larsen, WI 54947 • Retail: 920-722-7233 • Wholesale: 920-778-8034 • www.primitivegatherings.us • store@primitivegatherings.us

©2022 No part of this pattern may be photocopied or reproduced without the consent of Primitive Gatherings. Protected by Federal Copyright Laws.

Stitch rows together with long sashings as shown below.

FINISHED SIZE WITHOUT BORDERS:
71" X 91"



OPTIONAL 6" BORDER for a larger quilt if desired
CUTTING:

2 - 6½" x 91½" - side borders

2 - 6½" x 83½" - top and bottom borders

FINISHED SIZE WITH BORDERS:
83" X 103"