



BLACK STAR FLOWER FARM

Cotton Summer Block of the Month 2023 • Block 10



★ ★

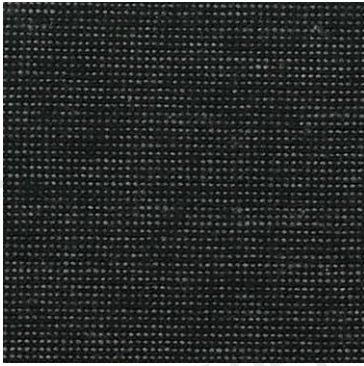
Primitive Gatherings

Website: www.primitivegatherings.us • E-mail: store@primitivegatherings.us

©2023 No part of this pattern may be photocopied or reproduced without the consent of Primitive Gatherings. Protected by Federal Copyright Laws.

BLOCK 10 - FABRIC KEY

FABRIC 8



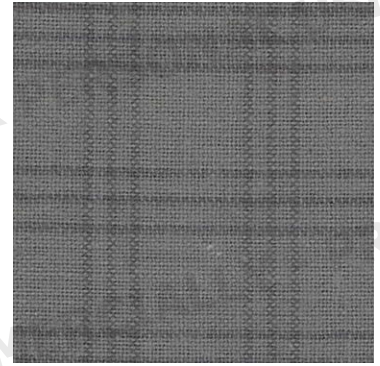
FABRIC 13



FABRIC 31



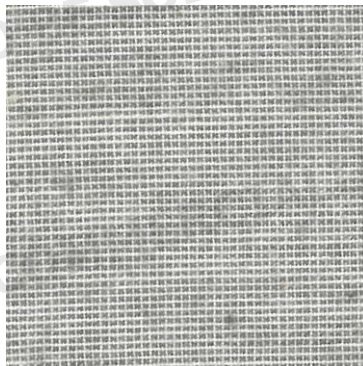
FABRIC 32



FABRIC 33



STEMS & LEAVES



Follow the key for the fabric print needed for each applique. Save each key given for future blocks.

FABRICS NEEDED:

- Fabric #8 - bird
- Fabric #13 - buds
- Fabric #31 - large flowers
- Fabric #32 - flower middles
- Fabric #33 - flower, bud & leaf centers
- Stems & leaves

GENERAL DIRECTIONS:

I used freezer paper appliqué with needle turn, feel free to use your favorite method. When using freezer paper the design is traced on the dull side of the freezer paper. Cut out the design and place the shiny side of the freezer paper on the right side of the fabric. Iron in place, leaving a 1/4" around the piece. Trace around the edge with a pencil (white lead for dark fabrics and colored lead for light fabrics). Cut out leaving a scant 1/4" seam allowance. Use needle turn method to sew just past the drawn line. The freezer paper templates can be used multiple times.

Layout the applique pieces using the photo and diagram on a light box to check placement. Make sure you are inside your finished measurements. You can also make a clear overlay to aid in placement if you want it to be exact.

Press with lots of steam, keeping the iron moving at all times in an up and down motion. Turn block over and press and steam from the back as well.

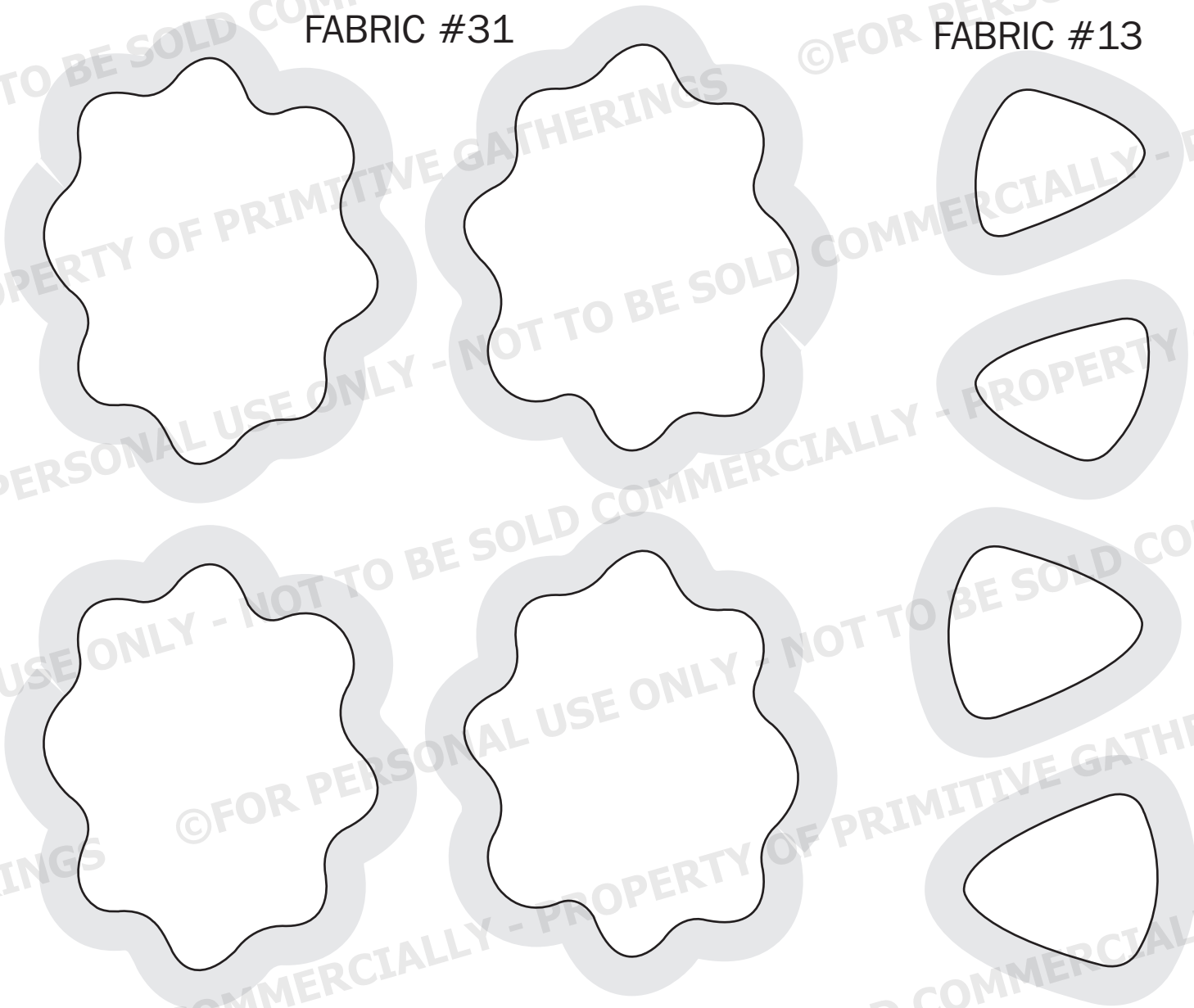
STEMS:

Use whatever method you feel comfortable with for the stems.

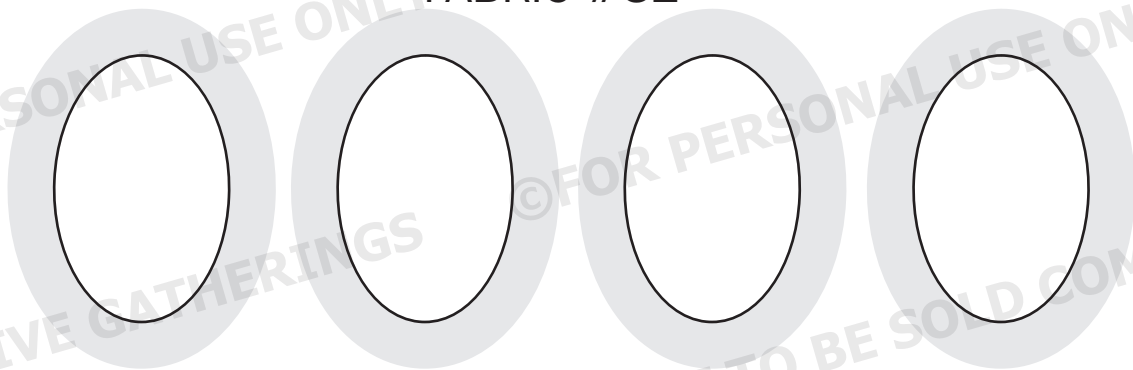
Trim block to 14½" x 14½".

FABRIC #31

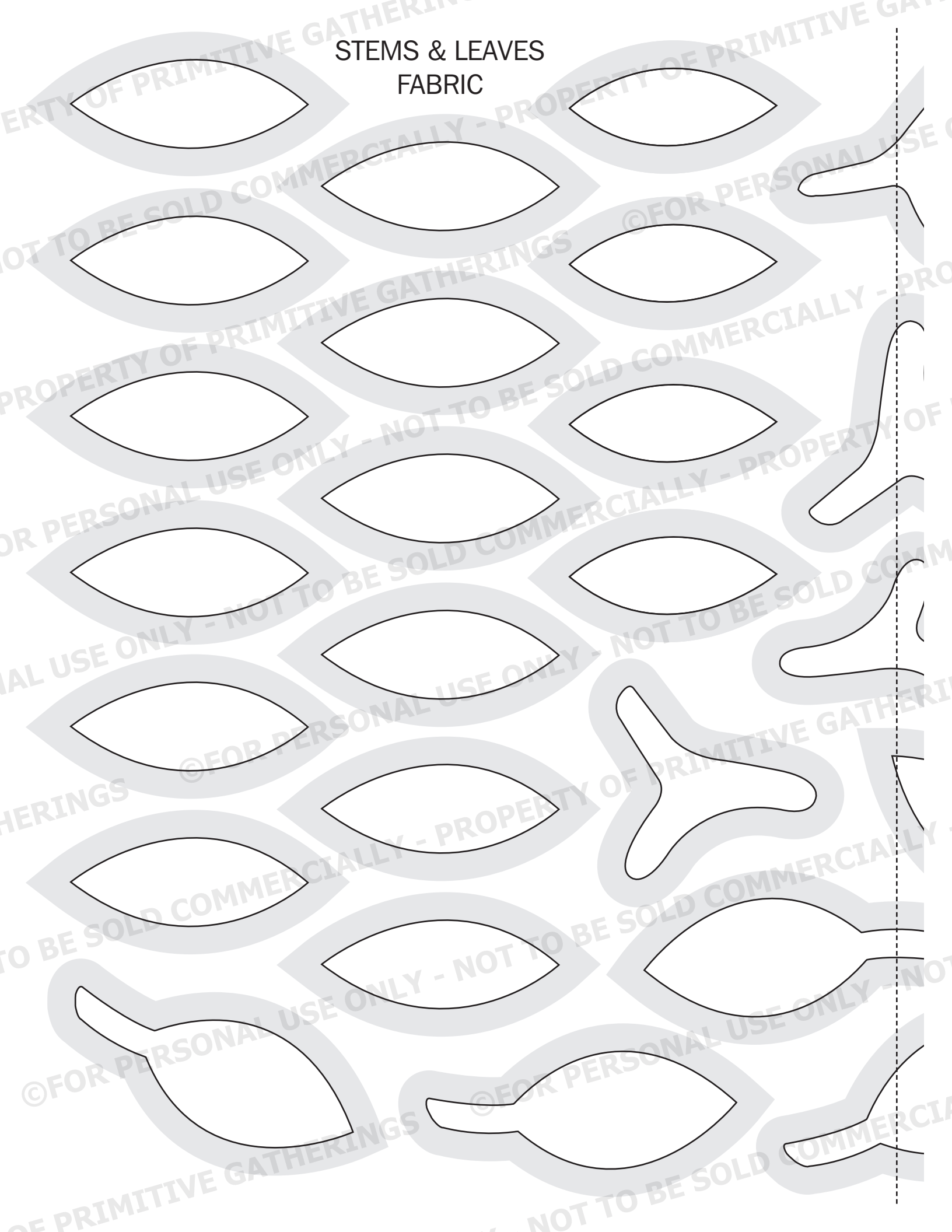
FABRIC #13



FABRIC #32



STEMS & LEAVES
FABRIC



FABRIC #33



FABRIC #8

